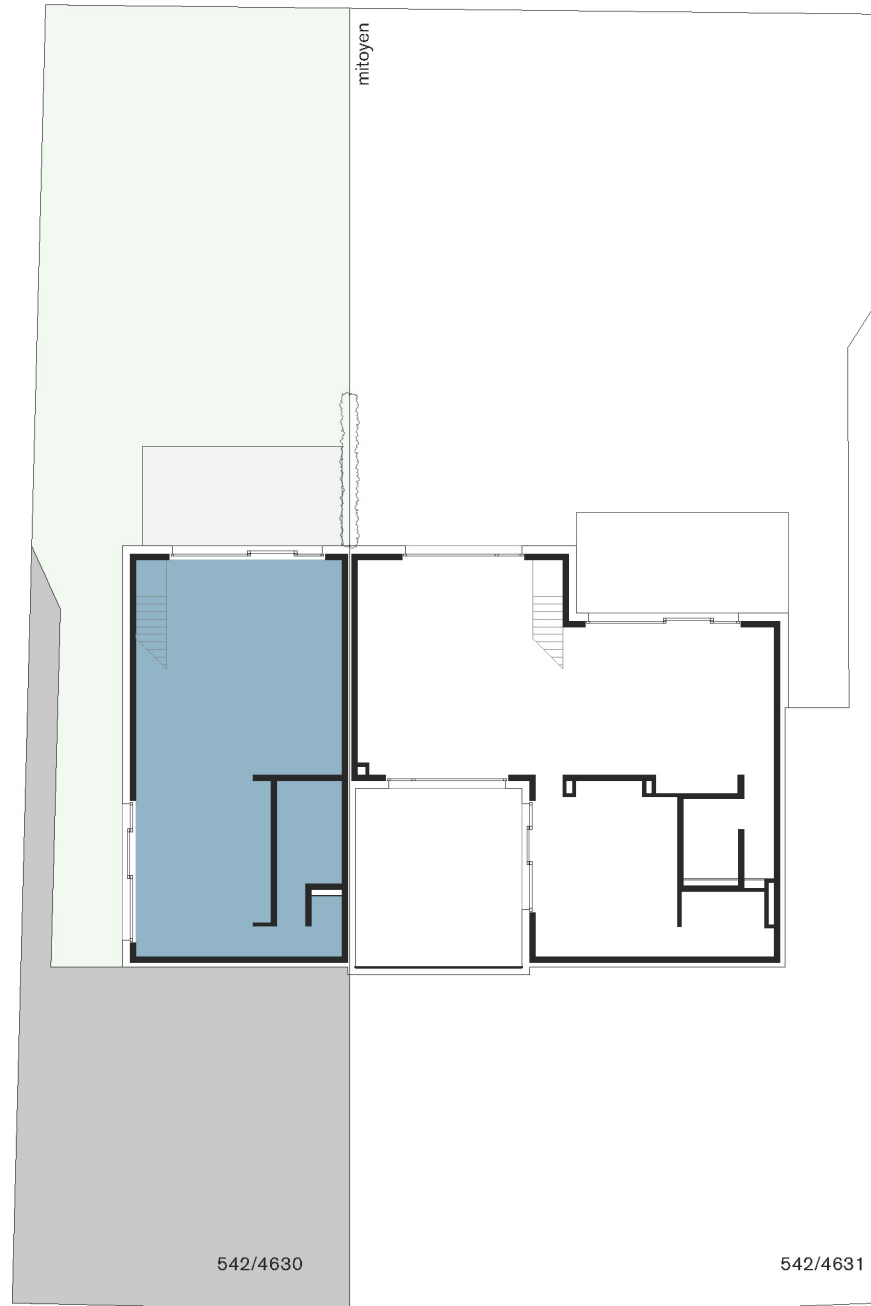


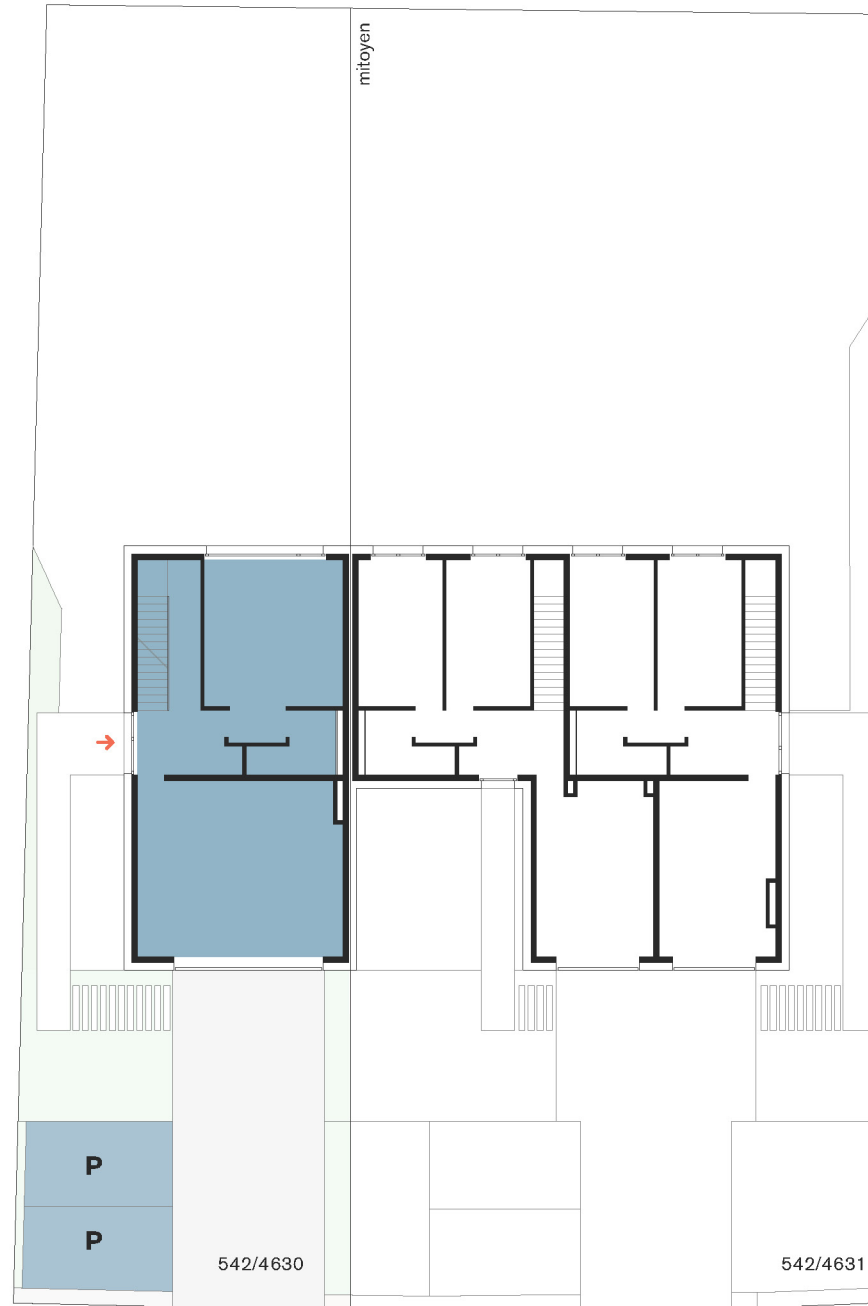
MAISON UNIFAMILIALE ET BIFAMILIALE

44, rue principale L-5367 Schuttrange

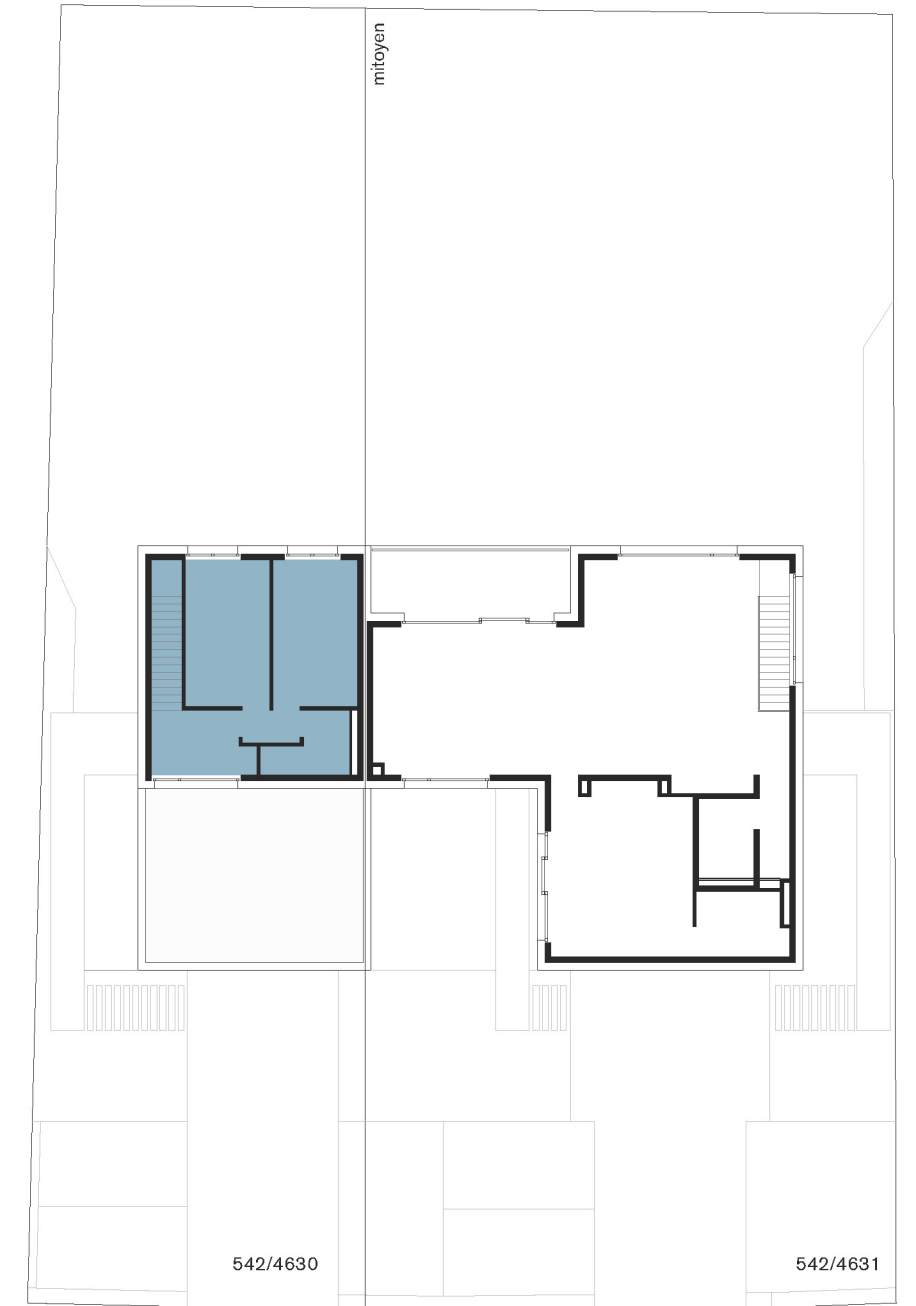
maison unifamiliale



rez-de-jardin



rez-de-chaussée



étage

maison

surface nette habitable	180,13 m ²
garage intérieur / surface nette	39,06 m ²
terrasse / surface nette	21,78 m ²
surface totale	240,97 m²
contenance parcelle	4,55 ares

jardin

terrasse

+/- 21,78m²

680

710

salon

+/- 48,28m²

294

215

local technique
+/- 9,08m²

339⁵

cuisine / séjour

+/- 25,98m²

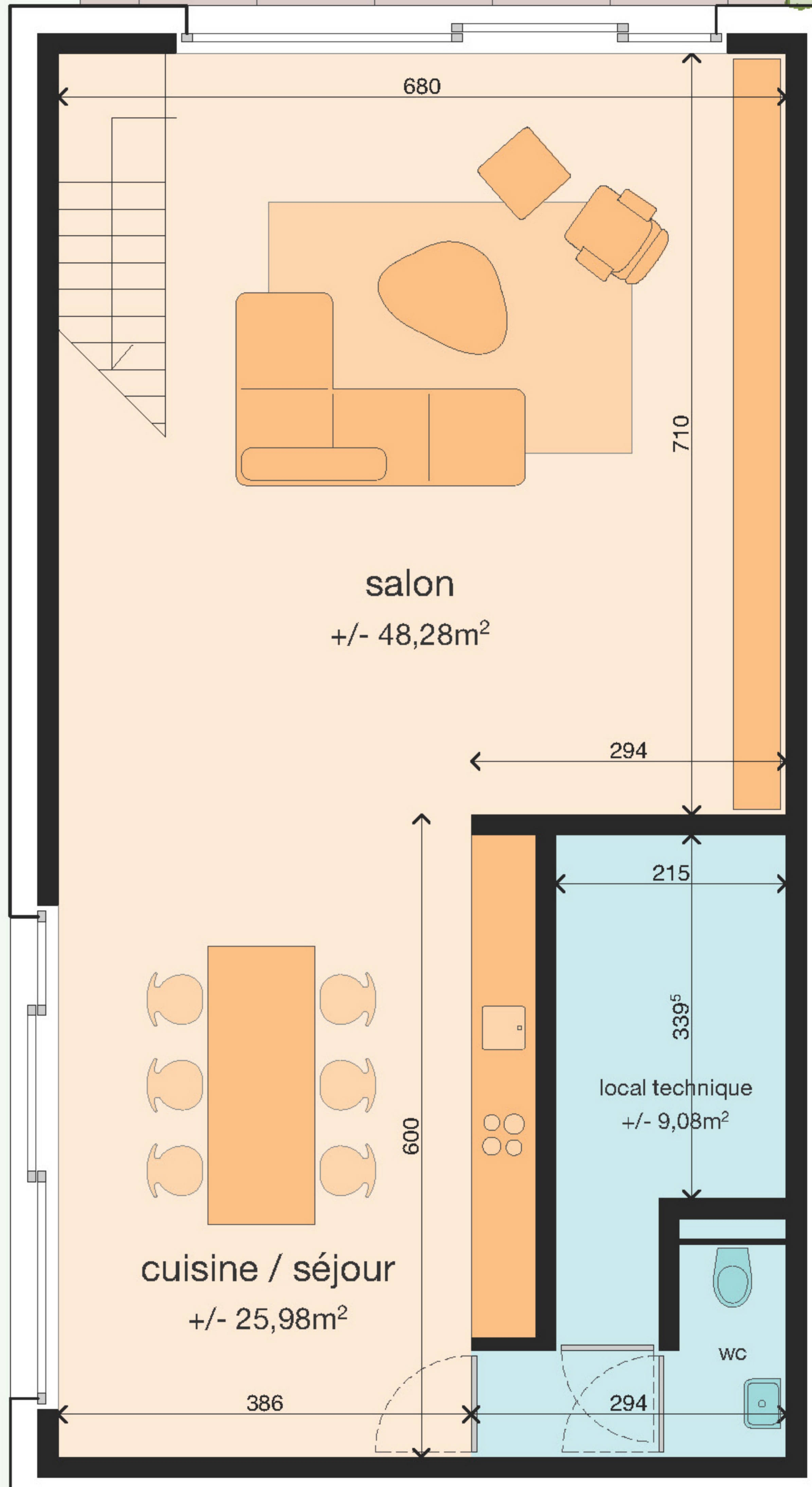
600

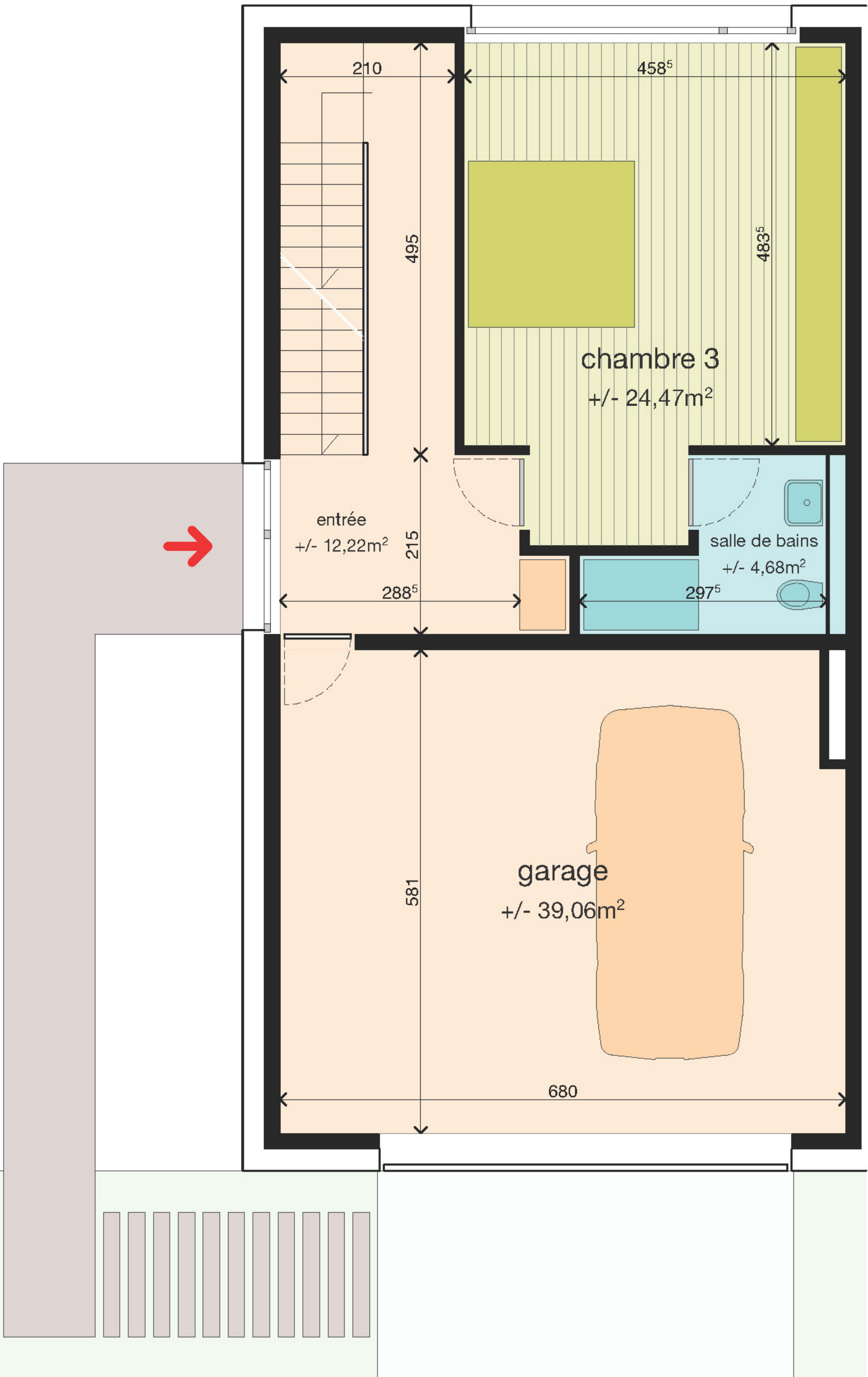
386

294

WC

rez-de-jardin





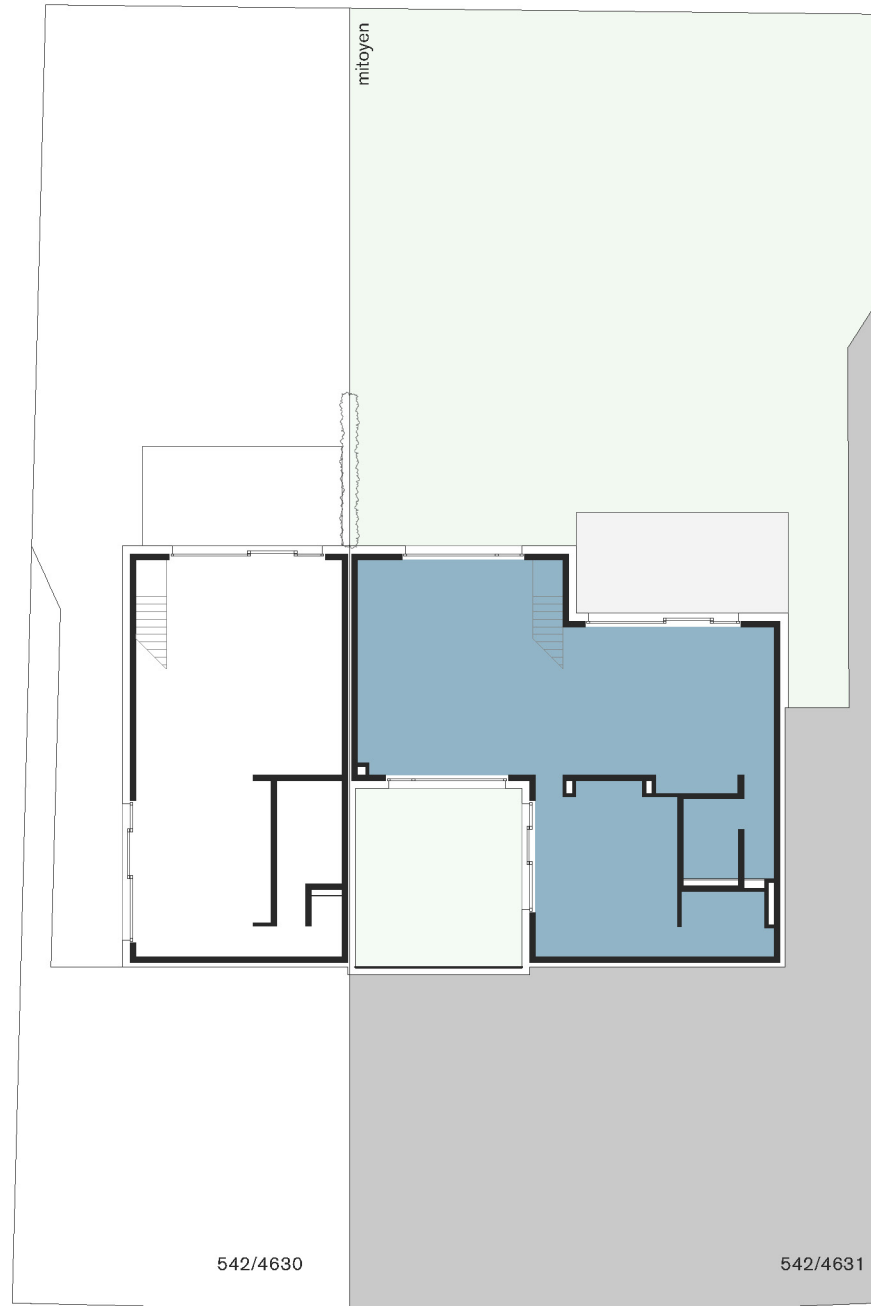
rez-de-chaussée



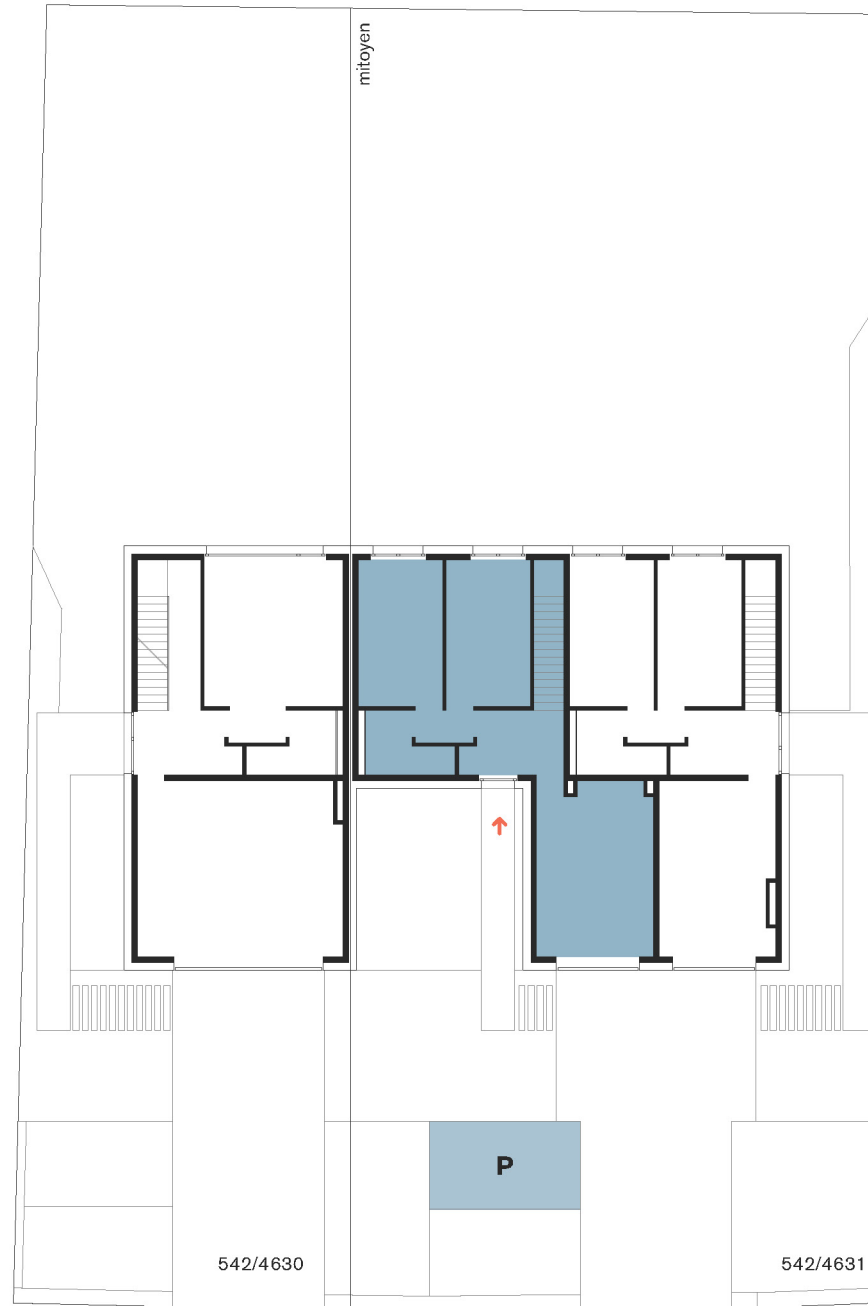
MAISON UNIFAMILIALE ET BIFAMILIALE

42a, rue principale L-5367 Schuttrange

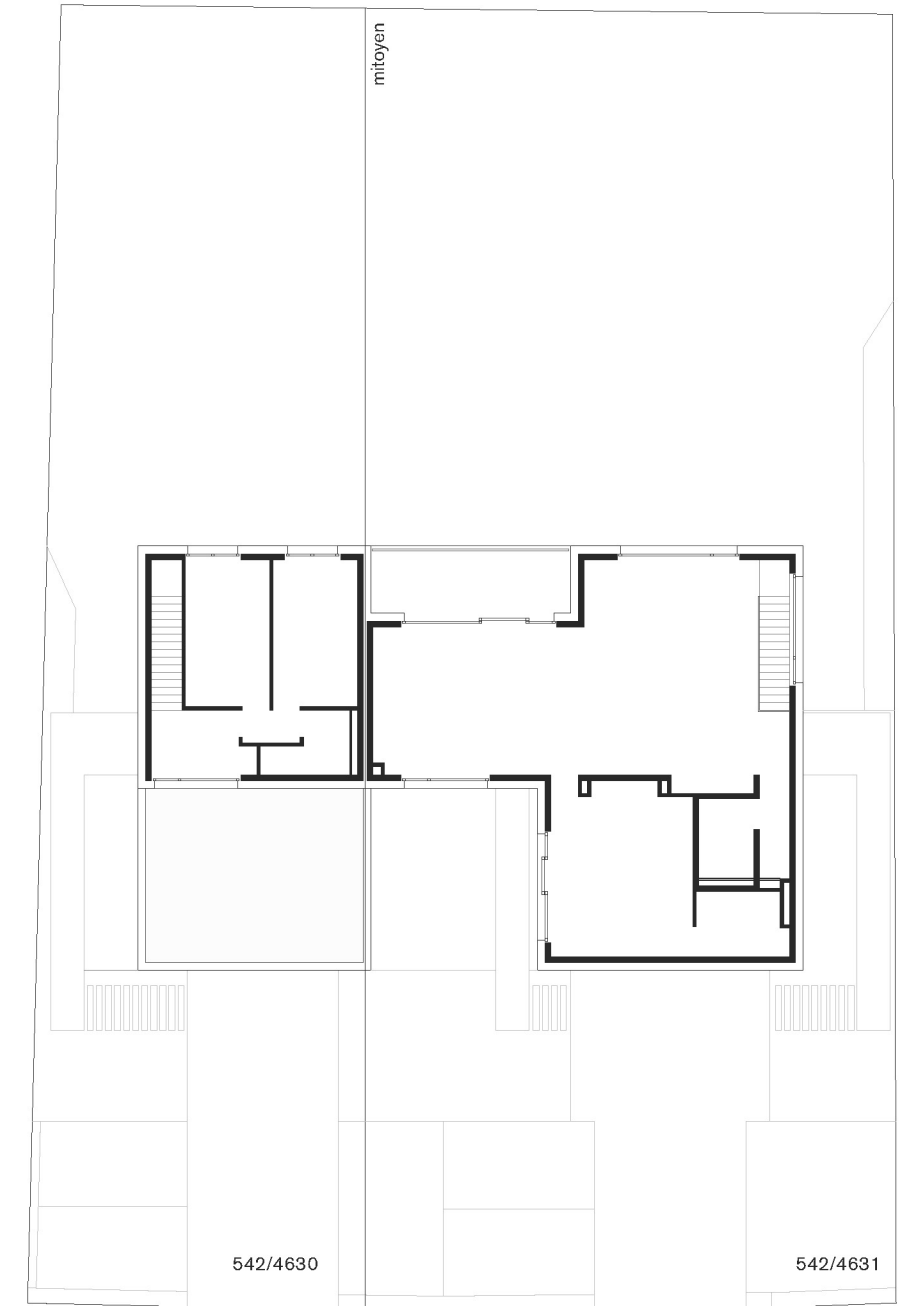
maison bifamiliale / appartement duplex A



rez-de-jardin



rez-de-chaussée



étage

appartement duplex A

surface appartement duplex / cadastre vertical	171,19 m ²
garage intérieur / surface nette	22,01 m ²
terrasse / surface nette	23,07 m ²
surface totale	216,27 m²
surface jardins	3,49 ares

jardin



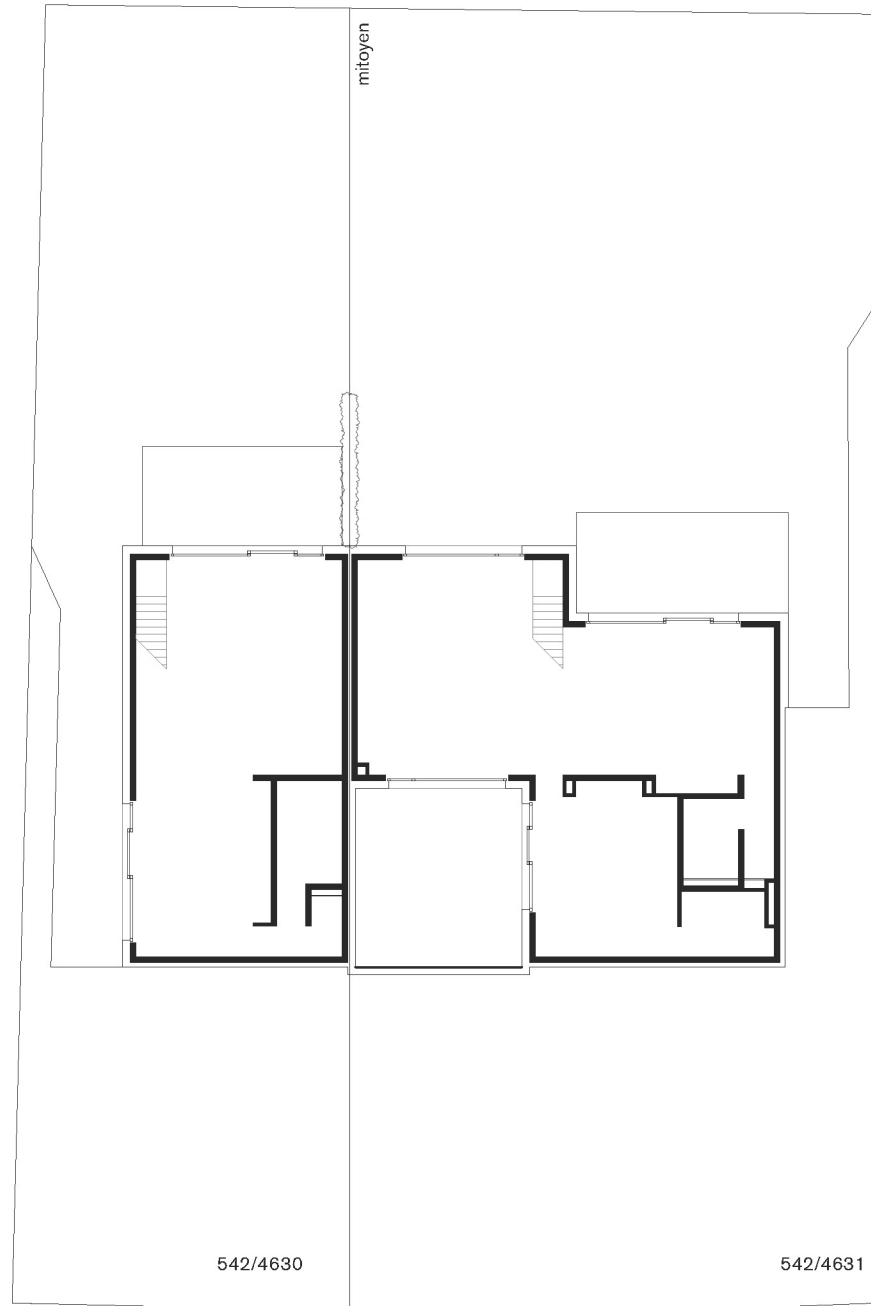
rez-de-jardin



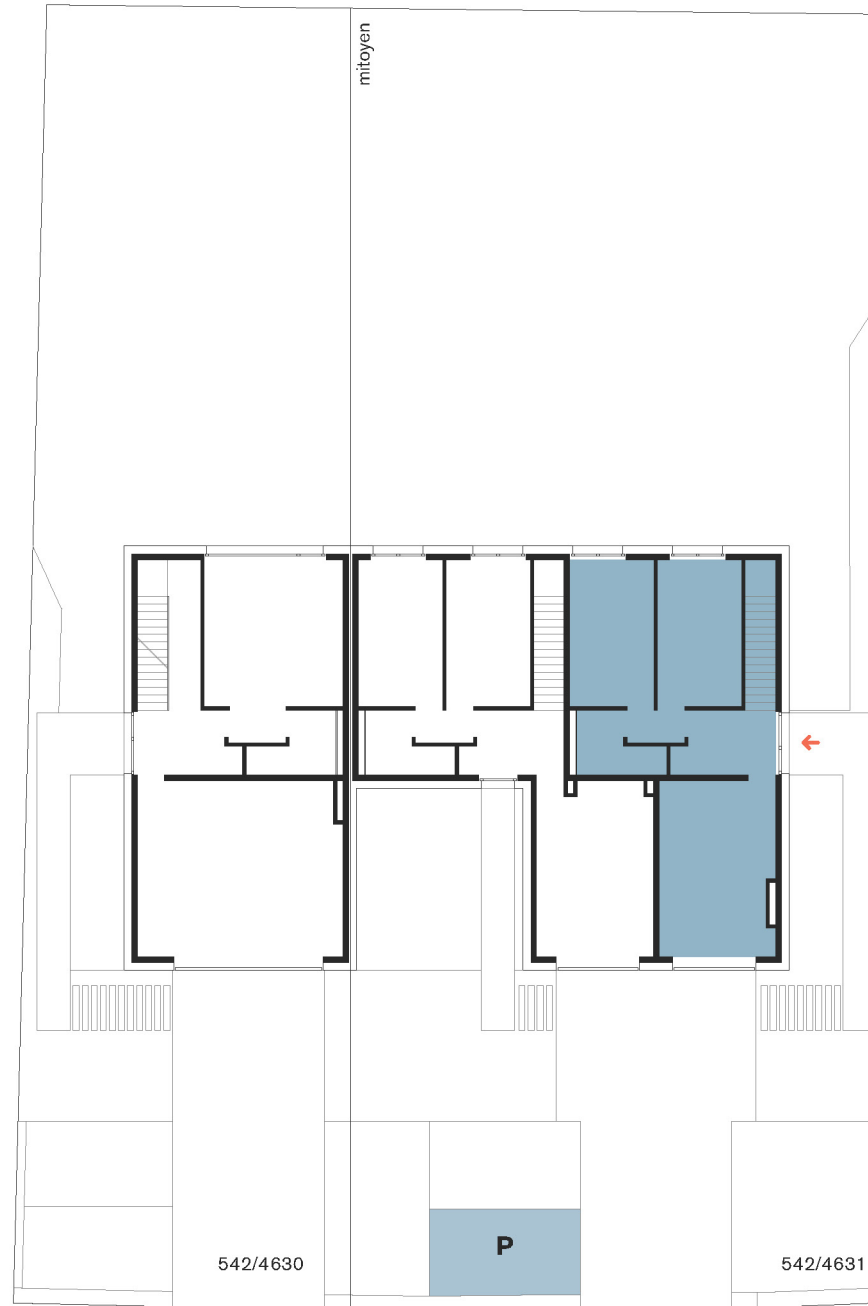
MAISON UNIFAMILIALE ET BIFAMILIALE

42b, rue principale L-5367 Schuttrange

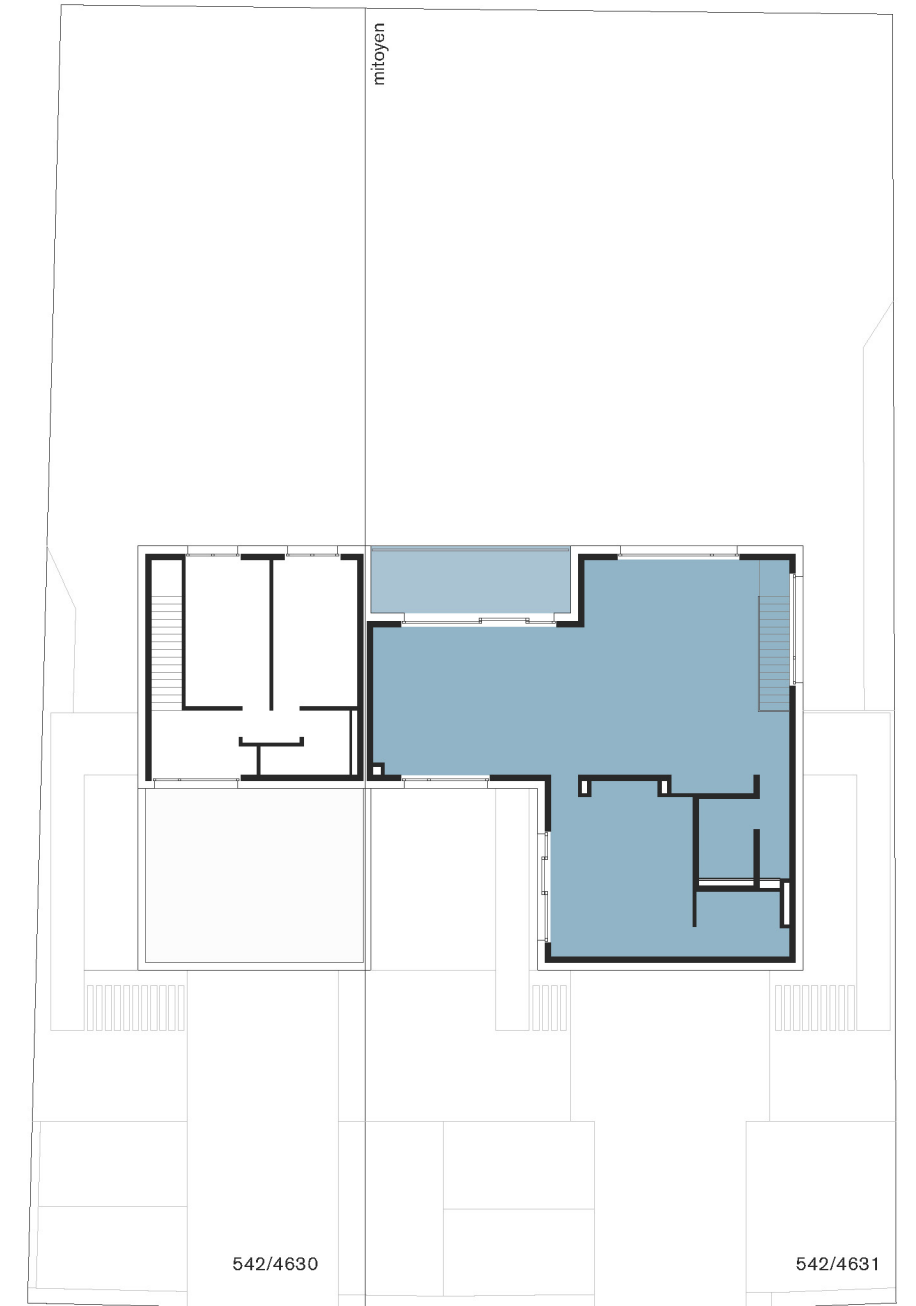
maison bifamiliale / appartement duplex B



rez-de-jardin



rez-de-chaussée



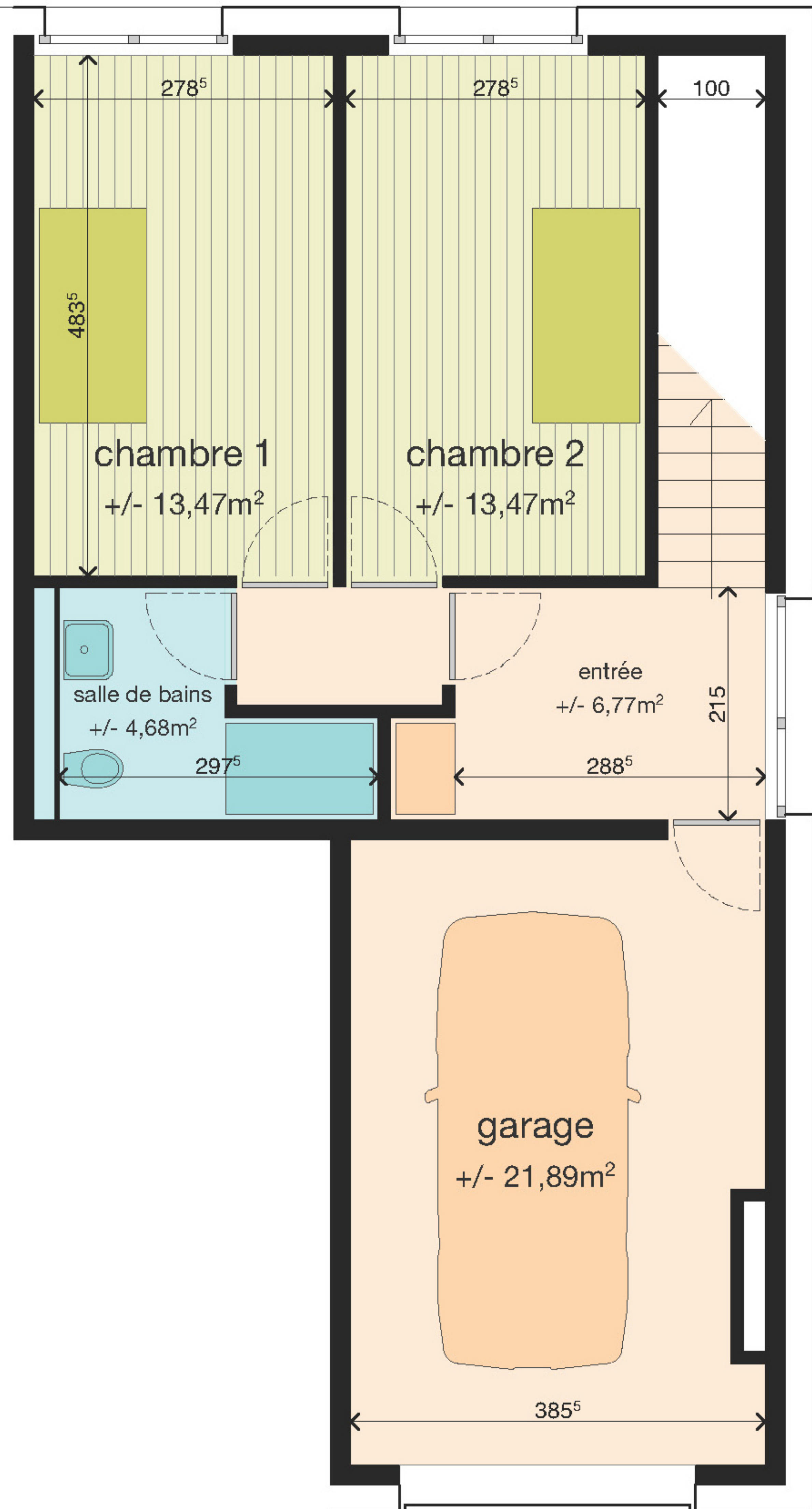
étage

appartement B

surface appartement duplex / cadastre vertical
garage intérieur / surface nette
terrasse / surface nette
surface totale

172,61 m²
21,90 m²
14,52 m²
209,03 m²





rez-de-chaussée

