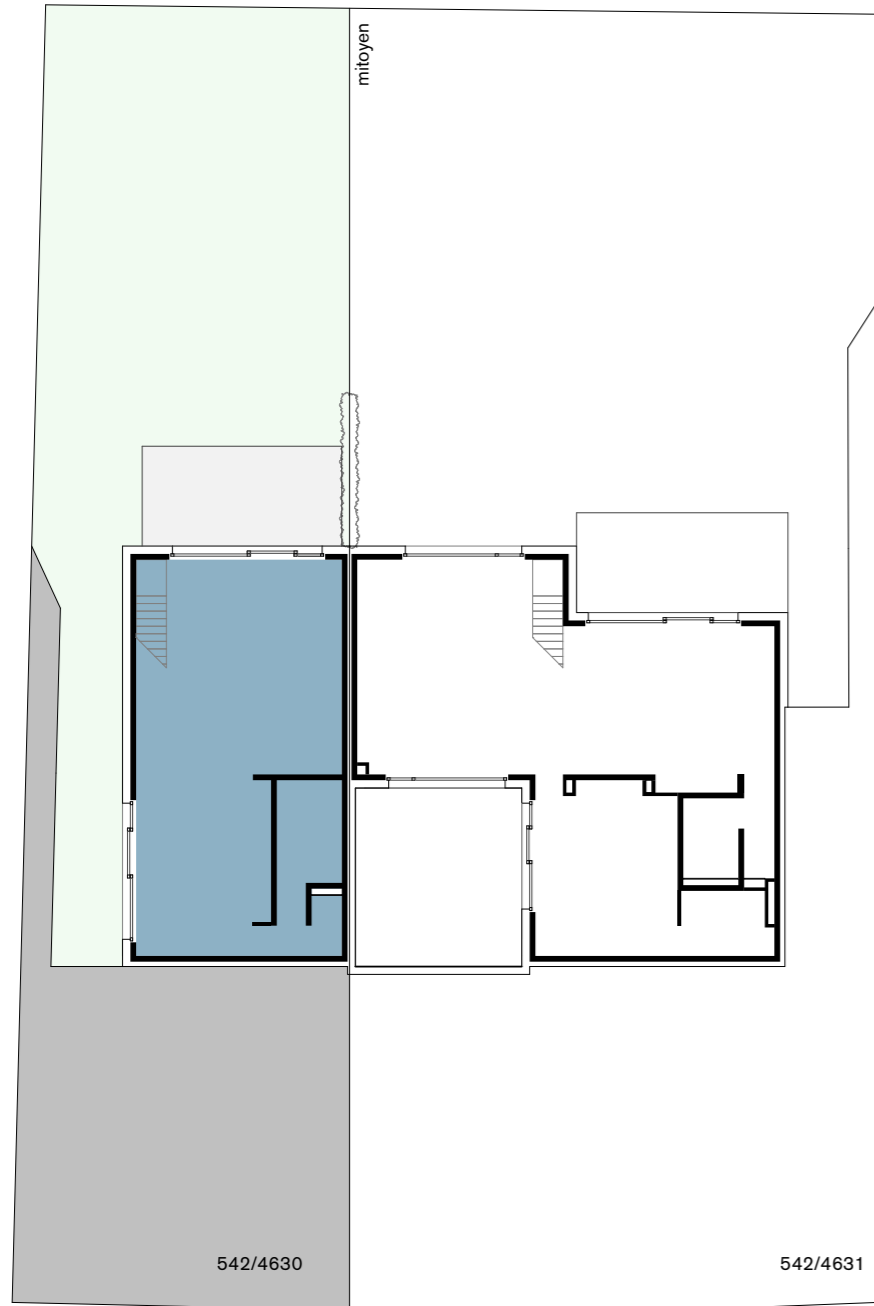


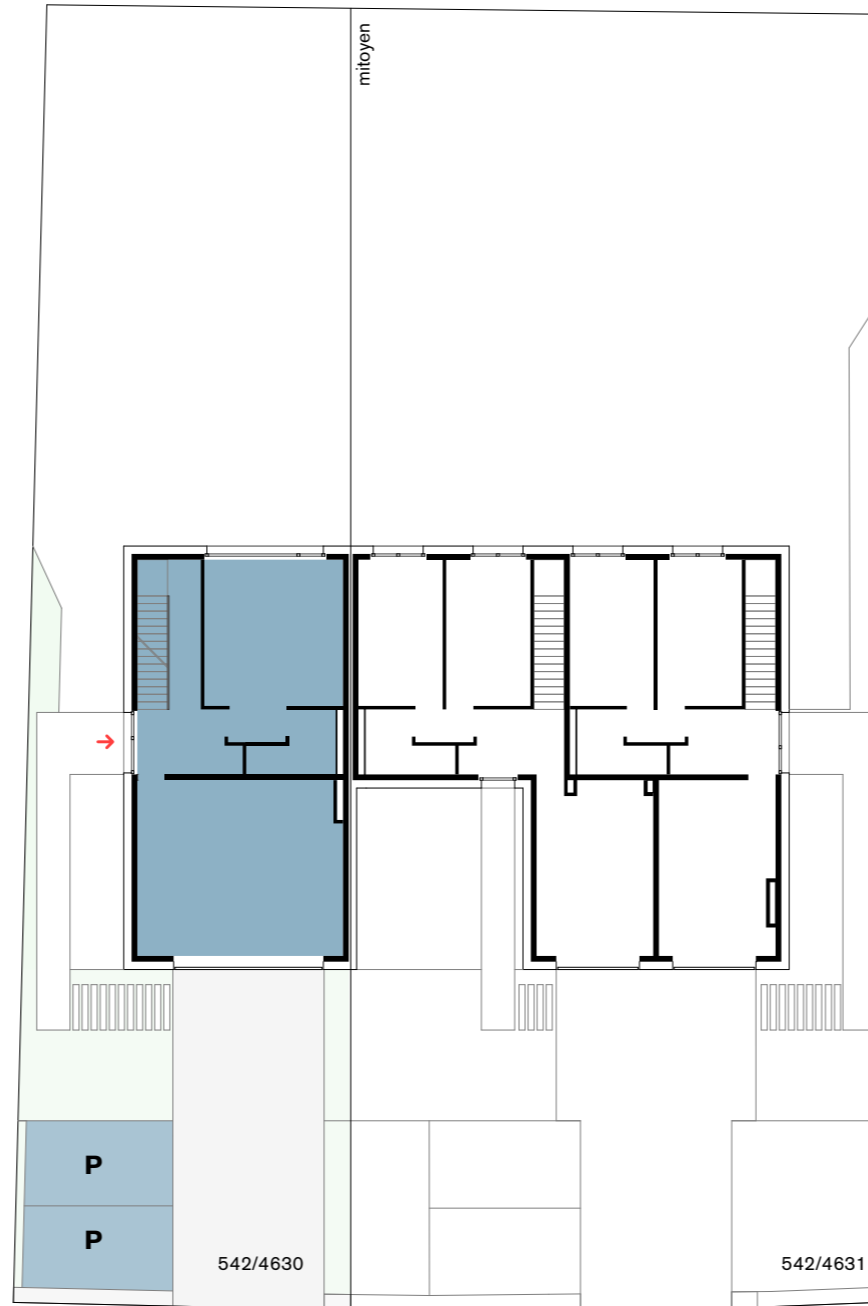
# MAISON UNIFAMILIALE ET BIFAMILIALE

44, rue principale L-5367 Schuttrange

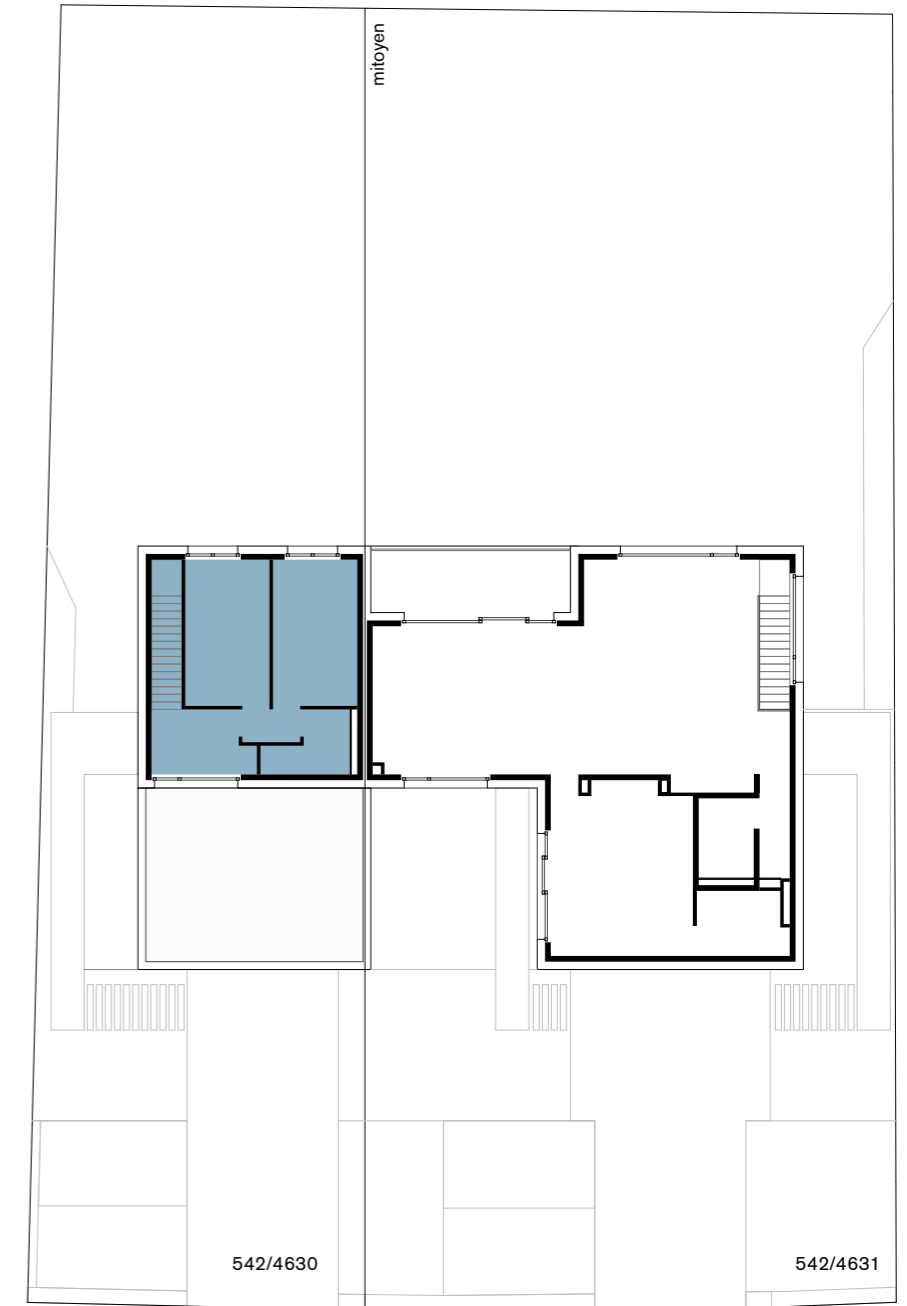
maison unifamiliale



rez-de-jardin



rez-de-chaussée



étage

## maison

surface nette habitable	180,13 m <sup>2</sup>
garage intérieur / surface nette	39,06 m <sup>2</sup>
terrasse / surface nette	21,78 m <sup>2</sup>
<b>surface totale</b>	<b>240,97 m<sup>2</sup></b>
contenance parcelle	4,55 ares

