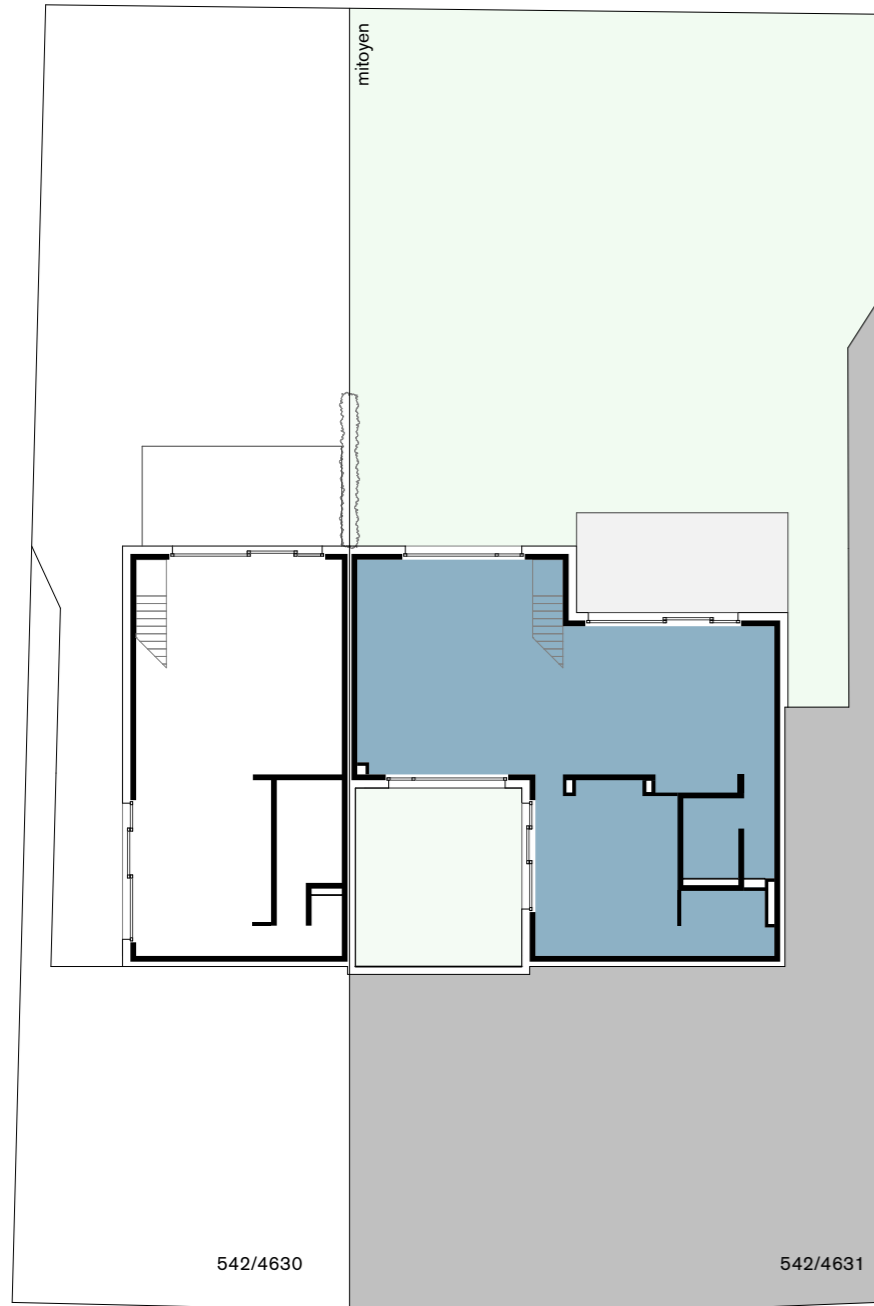


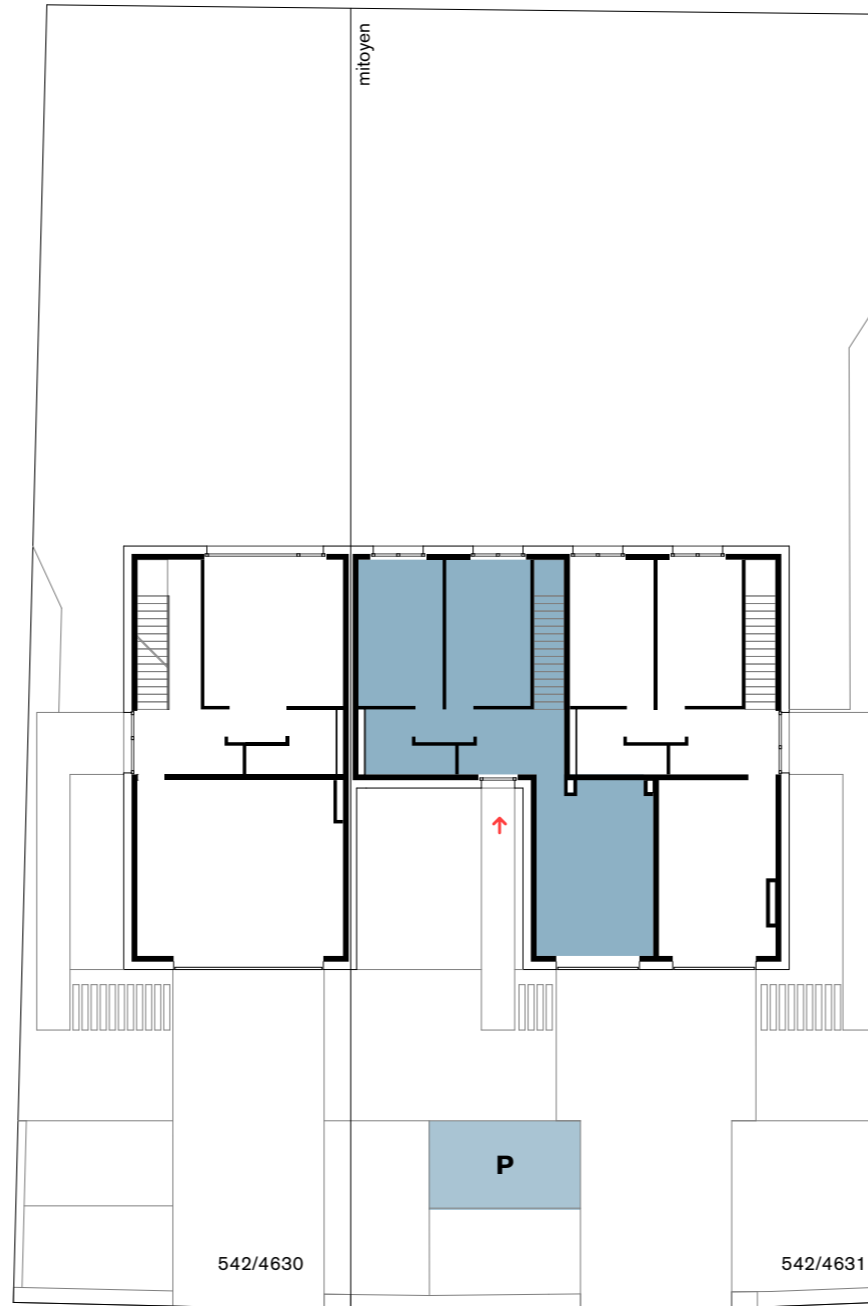
MAISON UNIFAMILIALE ET BIFAMILIALE

42a, rue principale L-5367 Schuttrange

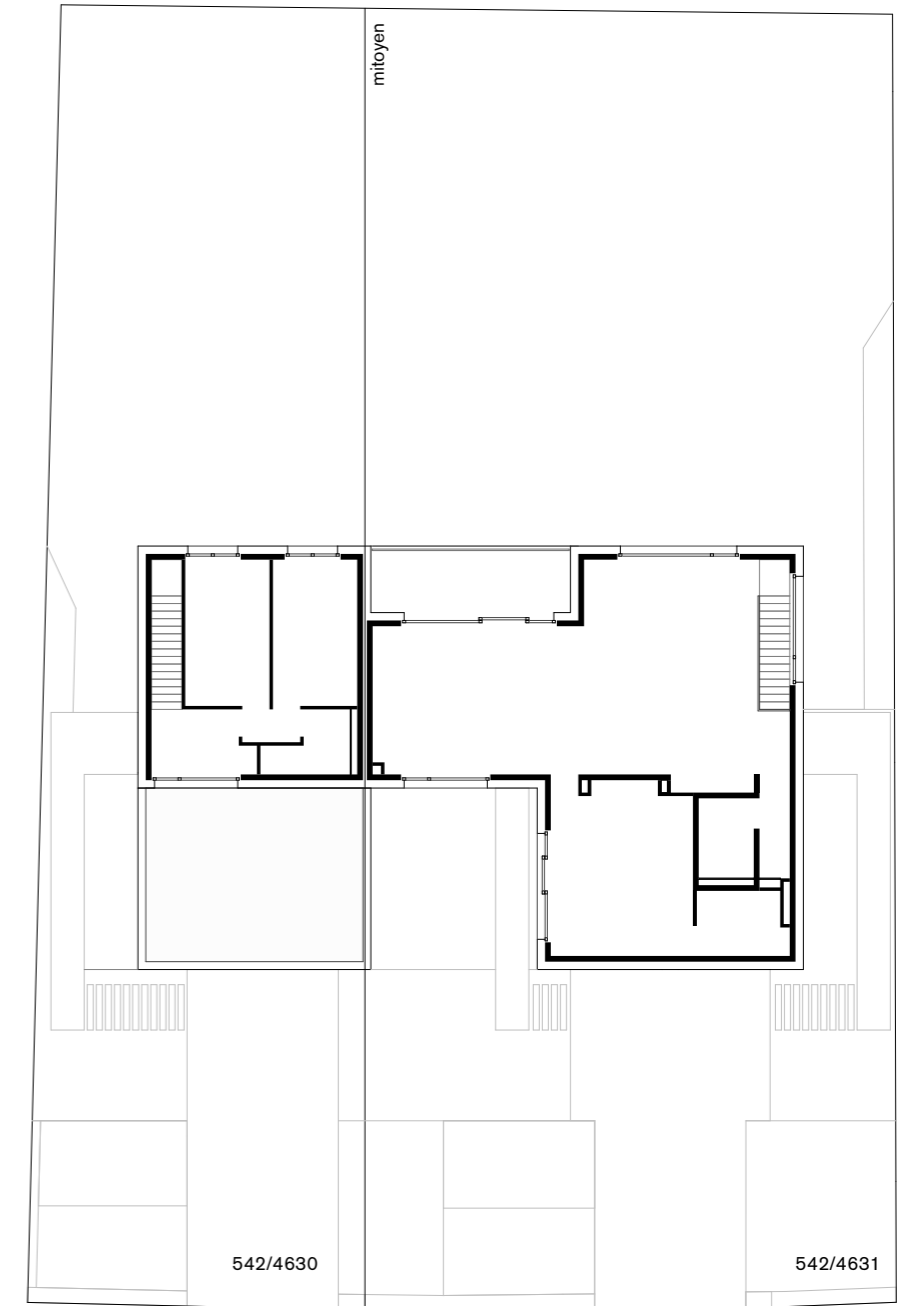
maison bifamiliale / appartement duplex A



rez-de-jardin



rez-de-chaussée



étage

appartement duplex A

surface appartement duplex / cadastre vertical	171,19 m ²
garage intérieur / surface nette	22,01 m ²
terrasse / surface nette	23,07 m ²
surface totale	216,27 m²
surface jardins	3,49 ares

