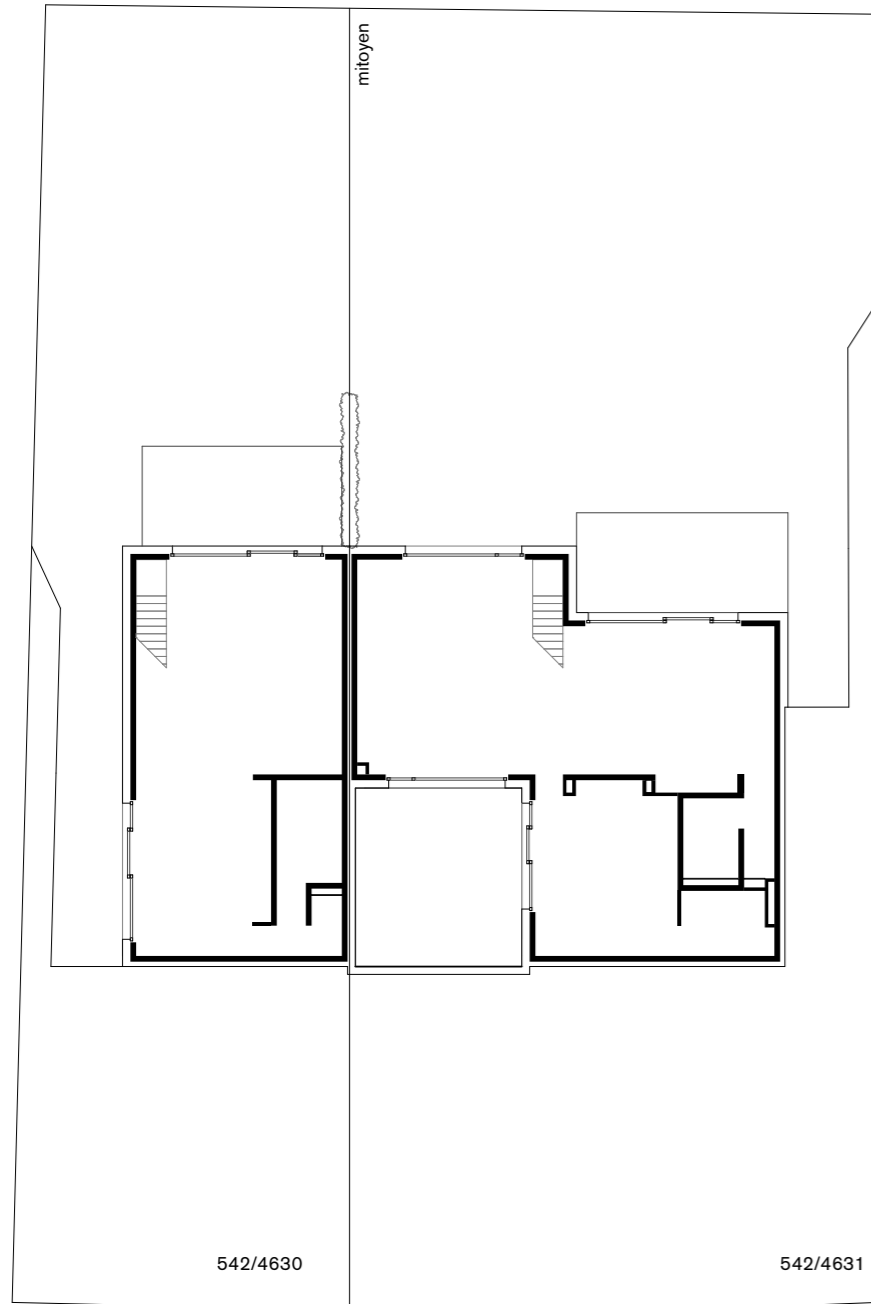


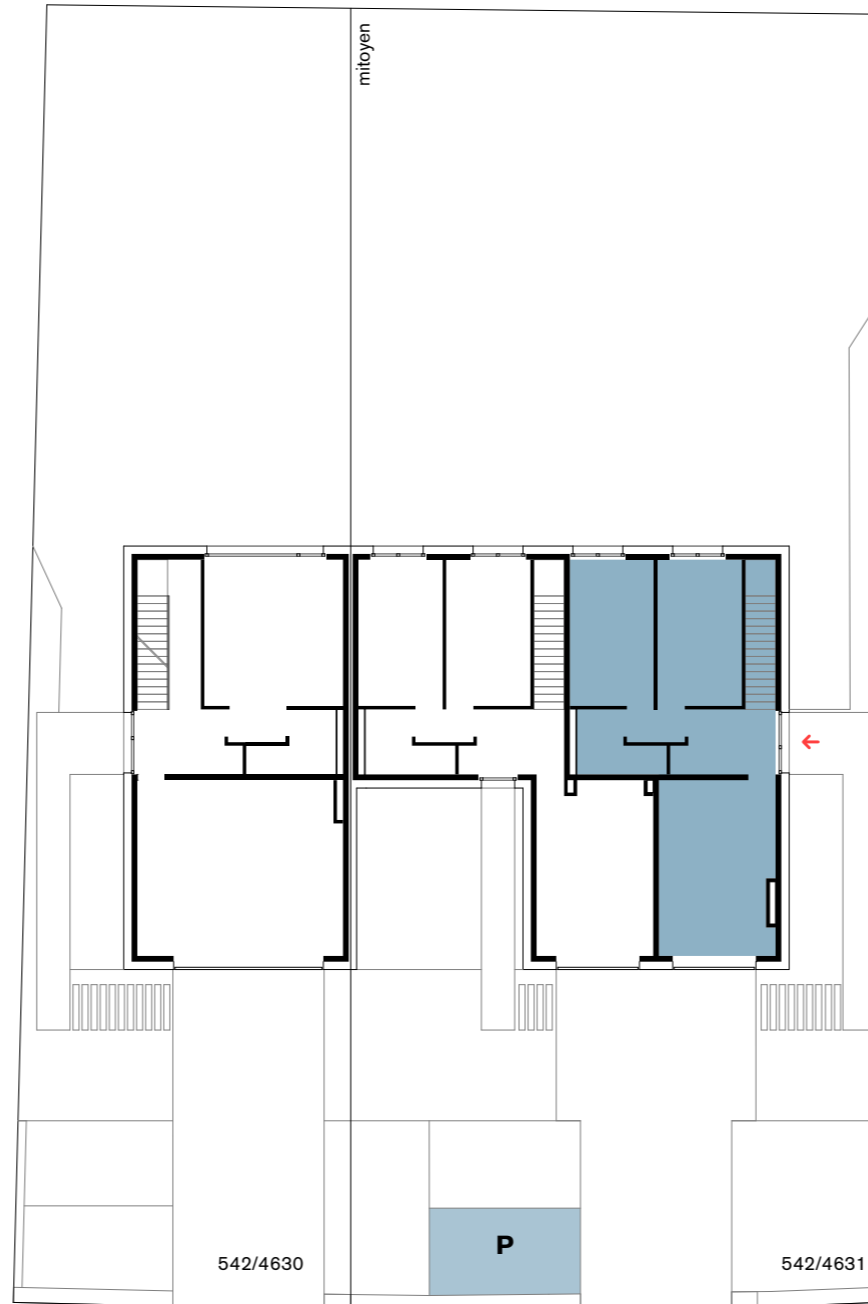
# MAISON UNIFAMILIALE ET BIFAMILIALE

42b, rue principale L-5367 Schuttrange

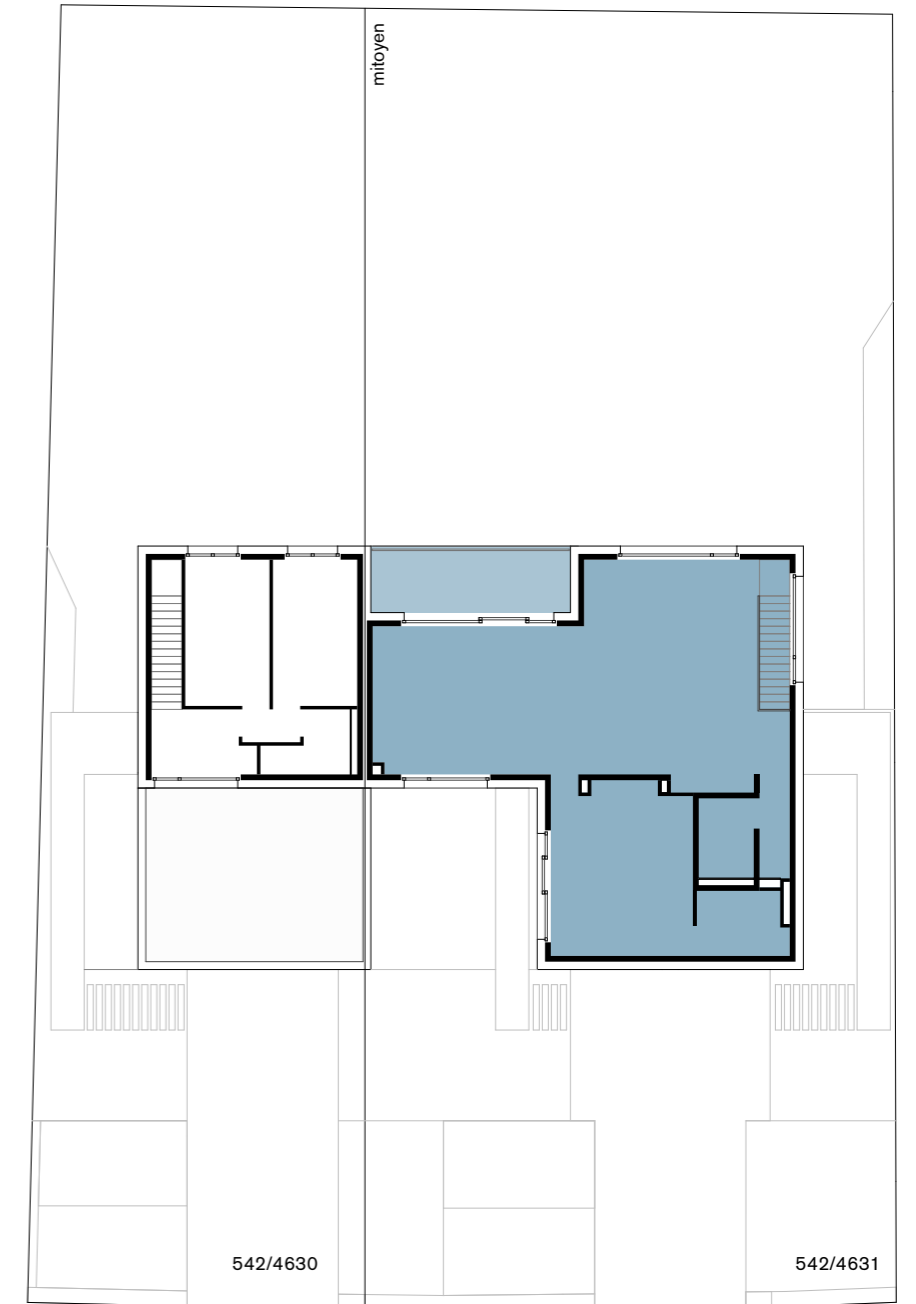
maison bifamiliale / appartement duplex B



rez-de-jardin



rez-de-chaussée



étage

## appartement B

surface appartement duplex / cadastre vertical  
garage intérieur / surface nette  
terrasse / surface nette  
surface totale

172,61 m<sup>2</sup>  
21,90 m<sup>2</sup>  
14,52 m<sup>2</sup>  
209,03 m<sup>2</sup>

